

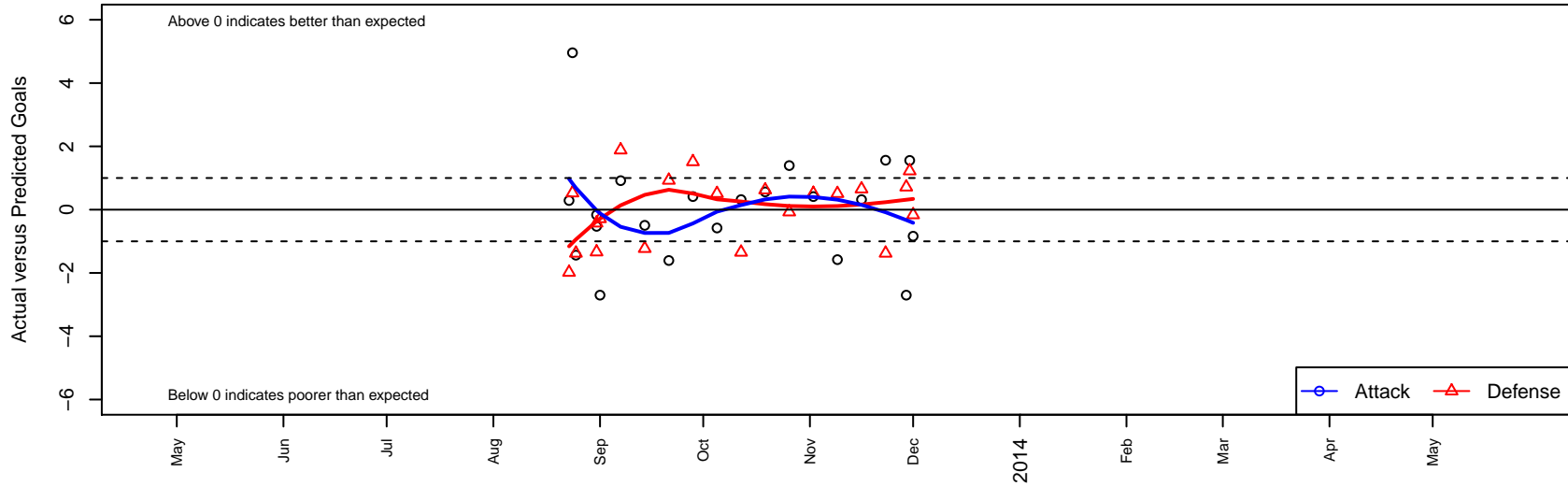
# NSC Vipers G02

North Shore SC  
 Woodinville, WA  
 G02 total strength=165  
 attack=0.14 defense=0.09  
 fall league = NPSL G11D2  
 alt names used:  
 NSC Vipers G02  
 Vipers  
 NSC Vipers

Venues played:  
 Sky River GU11  
 Puyallup Valley Kick-off Div 1 U11  
 NPSL G11D2  
 Cranberry Cup U11



**NSC Vipers G02**  
 Dots are actual minus expected GF (blue circles) and GA (red triangles).  
 Blue line is smoothed change in attack strength. Red is smoothed change in defense strength.



	<b>date</b>	<b>home</b>		<b>away</b>		<b>venue</b>	<b>pred.home</b>	<b>pred.away</b>
2995	2013-12-01	NSC Vipers G02	0	LWPFC White Stingrays G02	3	Cranberry Cup U11	0.84	2.84
2961	2013-11-30	NSC Vipers G02	3	Crossfire Select Miller G02	1	Cranberry Cup U11	1.44	2.22
2914	2013-11-29	SGESC Fusion Red G02	0	NSC Vipers G02	1	Cranberry Cup U11	0.71	3.70
2873	2013-11-23	MIFC Fusion G02	3	NSC Vipers G02	4	NPSL G11D2	1.62	2.44
2789	2013-11-16	BYSC Select Blue Angels G02	2	NSC Vipers G02	1	NPSL G11D2	2.65	0.68
2677	2013-11-09	NSC Vipers G02	0	NSC Thunder G02	1	NPSL G11D2	1.58	1.51
2533	2013-11-02	Lake Hills Supreme G02	1	NSC Vipers G02	2	NPSL G11D2	1.51	1.59
2387	2013-10-26	Mukilteo Rush G02	2	NSC Vipers G02	4	NPSL G11D2	1.93	2.61
2254	2013-10-19	NSC Vipers G02	3	MIFC Fusion G02	1	NPSL G11D2	2.44	1.62
2097	2013-10-12	NSC Vipers G02	1	BYSC Select Blue Angels G02	4	NPSL G11D2	0.68	2.65
1905	2013-10-05	NSC Vipers G02	1	NSC Thunder G02	1	NPSL G11D2	1.58	1.51
1725	2013-09-28	NSC Vipers G02	2	Lake Hills Supreme G02	0	NPSL G11D2	1.59	1.51
1585	2013-09-21	NSC Vipers G02	1	Mukilteo Rush G02	1	NPSL G11D2	2.61	1.93
1418	2013-09-14	ISC Arsenal Red G02	2	NSC Vipers G02	3	NPSL G11D2	0.77	3.49
1242	2013-09-07	Storm King G02	1	NSC Vipers G02	2	NPSL G11D2	2.88	1.08
1191	2013-09-01	NSC Vipers G02	1	SGESC Fusion Red G02	1	Puyallup Valley Kick-off Div 1 U11	3.70	0.71
1161	2013-08-31	NSC Vipers G02	1	Crossfire Select Reibold G02	2	Puyallup Valley Kick-off Div 1 U11	1.53	1.58
1163	2013-08-31	FPSC Black Cats G02	4	NSC Vipers G02	1	Puyallup Valley Kick-off Div 1 U11	2.66	1.17
1123	2013-08-25	NSC Vipers G02	1	MIFC Fusion G02	3	Sky River GU11	2.44	1.62
1083	2013-08-24	SCORE Patriots Blue G02	0	NSC Vipers G02	11	Sky River GU11	0.53	6.04
1033	2013-08-23	NSC Vipers G02	4	North Whidbey Islanders G02	3	Sky River GU11	3.71	1.02